

Faculty

Roland M Schmid, Christoph Schlag, Mohamed Abdelhafez
Dept. of Medicine II, Klinikum Rechts der Isar, Technical Univ. of Munich, Ismaninger Str. 22, 81675 Muenchen, DE

Frieder Berr, Andrej Wagner, Dept. of Medicine I, Paracelsus Medical University, Strubergasse 22, 5020 Salzburg, AT

Hans-Peter Allgaier
Department of Medicine, Diakoniekrankenhaus, 79110 Freiburg, DE

Franz-Ludwig Dumoulin
Dept. of Medicine, Gemeinschaftskrankenhaus, 53113 Bonn, DE

Jürgen Hochberger, Song-Sa Dammer
Dept. of Gastroenterology, Vivantes Klinikum im Friedrichshain Landsberger Allee 49, 10249 Berlin, DE

Sergey V. Kantsevoy
Institute for Digestive Health & Liver Diseases, Mercy Med. Center University of Maryland School of Medicine, Baltimore, MD, USA

Gerhard Kleber
Department of Medicine I, Ostalb-Klinikum, 73428 Aalen, DE

Thierry Ponchon
Hôpital Edouard Herriot, Spécialités Digestives, Lyon, FR

Tsuneo Oyama, Akiko Takahashi
Dept. of Endoscopy, Saku Central Hospital Advanced Care Center, Zip code 3850051, 3400-28 Nakagomi, Saku, Nagano, JP

Takashi Toyonaga
Dept. of Internal Medicine, Graduate School of Medicine, Kobe University, 7-5-1 Chu-o-ku, Kusunoki-Cho, Kobe, Hyogo, 650-0017, JP

Hans Seifert
Department of Internal Medicine - Gastroenterology, University Clinics Oldenburg, Rahel-Straus-Str. 10, 26133 Oldenburg, DE

Edris Wedi
Gastroenterology & GI Oncology, Univ-klinikum, Göttingen, DE

Naohisa Yahagi
Cancer Center, Keio University School of Medicine, 35 Shinanomachi, Shinjuku-ku, Tokyo, 160-8582, JP

Alexander Ziachehabi
Department of Internal Medicine IV, Ordens Hospital, Linz, AT

Sponsors

(list of 2018, sponsoring not yet confirmed)



Leonie Wild Charitable Foundation

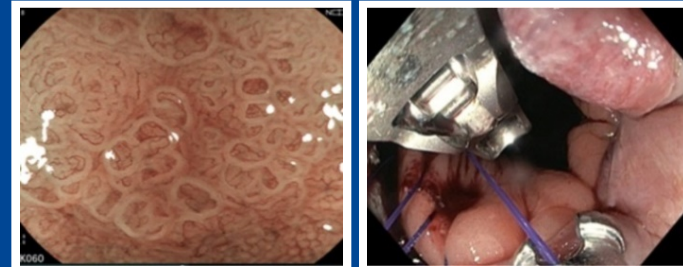
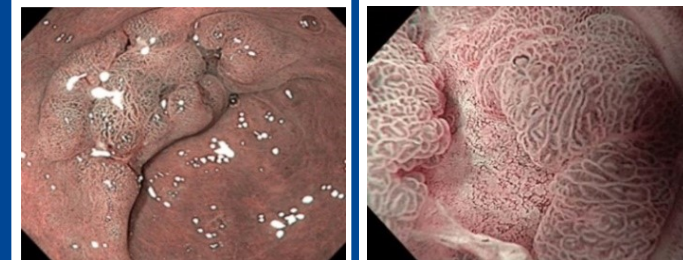
Endorsed by **Endo-Skills Update Munich 2019**
ESGE Early Gastrointestinal Cancer

June 28, 2019 8:00 - 16:15 **credits 8 DFP**

Dept. of Medicine II, Klinikum rechts der Isar
Technical University of Munich

Directors: Roland M. Schmid / DE, Thierry Ponchon / FR, Frieder Berr / AT
Organizers: Christoph Schlag / DE, Mohamed Abdelhafez / DE, Andrej Wagner / AT

Registration endo19@mri.tum.de
www.early-cancer.eu



Dear Colleagues,

we invite you to improve your skills in endoscopic analysis, therapeutic decision making and endoscopic resection of early neoplasias of the gastrointestinal tract:

- Accurate endoscopic assessment of surface and microvascular structure for prediction of pT category
- Indications for endoscopic versus minimal invasive surgical resection techniques
- Techniques for endoscopic en-bloc resection and suturing

This meeting focuses on all aspects to optimize endoscopic analysis and staging of neoplasias as well as strategies and performance of minimally invasive resections – to enhance proficiency in this new field.

We hope to stimulate your interest and welcome you to the Endo-Skill Update 2019 .



Th Ponchon president of ESGE
 R M Schmid Klinikum rechts der Isar, Technical Univ of Munich
 F Berr PMU Salzburg

The Update takes place under the patronage of



LIVE demonstrations, 4 cases:

Endoscopic staging & indication (15 min LIVE each)

En-bloc resection +/- suturing (60 min LIVE each)

	Toyonaga T	Yahagi N
lesion e.g.	GE-junction, AdenoCa	LST colon or duodenum
Diagnosis & comments	Hochberger J, Allgaier HP	Wagner A, Kleber G
	Kantsevov SV, Seifert H	Oyama T, Takahashi A
lesion e.g.	LST anorectal, ESD & suturing	gastric or esophageal NPL
Diagnosis & comments	Dumoulin FL, Schlag Ch	Wedi E, Ziachehabi A

PRESENTATIONS (4 topics, 20 min each)

8:00 Welcome

Session I - 8:15 - 10:30

Endoscopic Analysis & Indication - upper GI tract

Chairs: Schmid RM, Oyama T, Seifert H

Ziachehabi A: **Invasive early cancer in the gastrointestinal tract**

Oyama T: **How to stage early cancer in the upper GI tract (Quiz)**

10:30 - 11:00 Coffee break and Industry Exhibition

Session II - 11:00 - 12:30

Outcome of ESD of GI Neoplasias

Chairs: Hochberger J, Kantsevov SV, Dumoulin FL

Ponchon Th: **Results of ESD & benchmarks in Japan and Europe**

12:30 - 13:30 Lunch and Industry Exhibition

Session III - 13:30 - 16:15

Endoscopic Analysis & Indication - lower GI tract

Chairs: Ponchon Th, Yahagi N, Toyonaga T

Yahagi N: **How to stage early neoplasias in colorectum and duodenum (Quiz)**

Conclusions and Farewell Yahagi N, Schmid RM

Registration

Participation fee: 75 € (ESGE/DGVS/ÖGGH: 50 €)

Registration under endo19@mri.tum.de

Credits

8 DFP points (ID **pending**)
 (Diplom-Fortbildung, **URL**)

Contact Information

PD Dr Christoph Schlag

email: endo19@mri.tum.de

URL www.early-cancer.eu

Venue

Technical University of Munich, TranslaTUM
 Einstein Str 25, 81675 Muenchen, Germany

